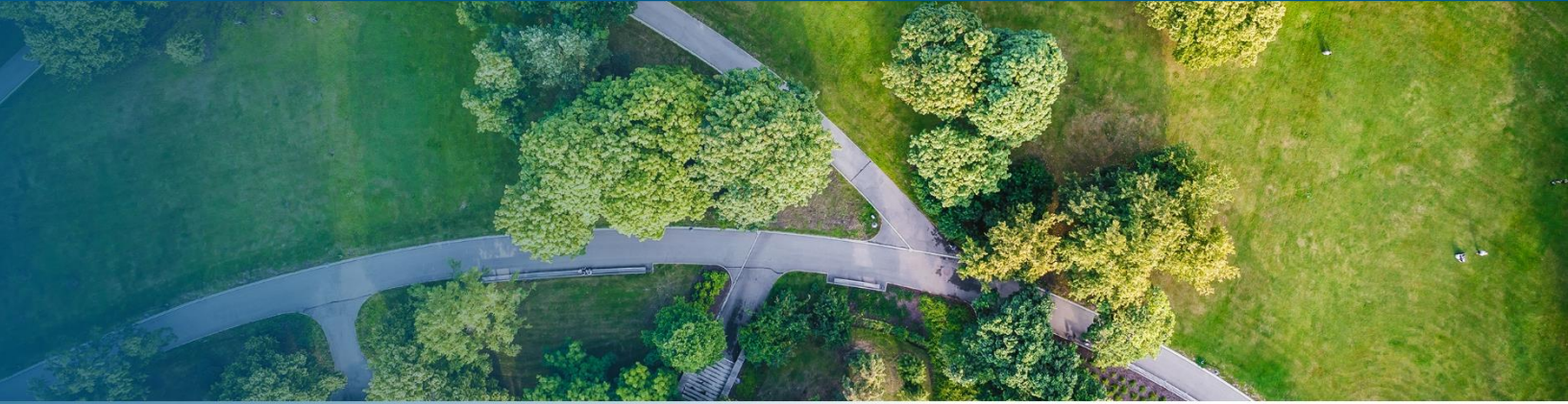


Measure Index

APPENDIX E



This appendix provides a roadmap for all measures in the Handbook—emissions reduction, climate risk reduction, and health and equity—by topic or focus area. While not a true index, it aims to assist users to find measures based on concepts, themes, and topics across all chapters in the Handbook. A user primarily interested in addressing tree canopy, for example, can find all relevant measures quickly using the index, regardless of chapter.

The index organizes measures by the following concepts, themes, and topics.

Active transportation: Measures that facilitate or increase human-powered transportation, such as walking, bicycling, rollerskating, or skateboarding.

Affordable housing: Measures that support increased access to affordable housing.

Air quality exposure reduction: Measures that reduce people’s direct exposure to air pollution.

Climate resilience: Measures that support an individual, project, community, or jurisdiction’s ability and capacity to withstand, respond to, and recover from climate change-related impact and disruptions.

Community ownership and self-determination: Measures that increase a community’s capacity to meaningfully participate in and have ownership over the decisionmaking, planning, and outcomes that affect their community.

Economic resilience: Measures that enhance the local economy’s capacity to withstand, respond to, and recover from disruptions, both natural and human-caused.

Energy and grid resilience: Measures that increase individual and community energy savings, support renewable energy generation, and enhance grid resilience.

Food justice and access: Measures that increase food access for all and address structural barriers to food access.

Green infrastructure and low-impact development (LID): Measures that support systems and practices to manage stormwater using natural processes—through infiltration, evapotranspiration, or storage and use—to protect water quality and water resources, reduce flood risk, recharge groundwater, and protect habitat. LID and green infrastructure generally seek to protect, restore, or create green spaces (U.S. EPA n.d.).

Job development: Measures that generate jobs, support emerging industries, and increase employment.

Nature-based solutions: Measures that enlist natural processes, habitats, and ecosystems to help address environmental or socioeconomic challenges while simultaneously benefiting the environment.

Passive survivability: Measures that support a building’s ability to maintain livable conditions when facing extreme heat and weather, particularly when disconnected from utilities.

Poverty: Measures that help to address poverty and socio-economic deprivation.

Racial equity: Measures that advance racial justice, address historical racial inequities, and support conditions in which racial identity no longer predicts one’s socioeconomic outcomes, health, and wellbeing.

Social inclusion: Measures that support the just and fair inclusion of all individuals into society in which all can participate, prosper, and reach their full potential (PolicyLink n.d.).

Social resilience: Measures that support the ability of people and communities to respond to and recover collectively from traumas, disruptions, and stresses. While social resilience is intangible and a reflection of the strength of community bonds, it can be fostered by the built environment through the creation of social spaces that facilitate relationship-building.

Tree canopy: Measures that support tree planting as well as care and maintenance of existing trees in developed areas.

Urban heat island (UHI) reduction: Measures that reduce the urban heat island effect and extreme heat in developed areas through the use of passive cooling strategies and design features.

Active Transportation

Chapter 3

- T-3. Provide Transit-Oriented Development
- T-6. Implement Commute Trip Reduction Program (Mandatory Implementation and Monitoring)
- T-9. Implement Subsidized or Discounted Transit Program
- T-10. Provide End-of-Trip Bicycle Facilities
- T-17. Improve Street Connectivity
- T-18. Provide Pedestrian Network Improvement
- T-19-A. Construct or Improve Bike Facility
- T-19-B. Construct or Improve Bike Boulevard
- T-20. Expand Bikeway Network
- T-22-A. Implement Pedal (Non-Electric) Bikeshare Program
- T-22-B. Implement Electric Bikeshare Program
- T-25. Extend Transit Network Coverage or Hours
- T-26. Increase Transit Service Frequency
- T-28. Provide Bus Rapid Transit
- T-29. Reduce Transit Fares
- T-31-A. Locate Project in Area with High Destination Accessibility
- T-31-B. Improve Destination Accessibility in Underserved Areas
- T-32. Orient Project Toward Transit, Bicycle, or Pedestrian Facility
- T-33. Locate Project near Bike Path/ Bike Lane
- T-34. Provide Bike Parking
- T-35. Provide Traffic Calming Measures
- T-36. Create Urban Non-Motorized Zones
- T-37. Dedicate Land for Bike Trails

- T-46. Improve Transit Access, Safety, and Comfort

- T-47. Provide Bike Parking Near Transit

Chapter 4

- MH-14. Maintain Trails and Parks
- MH-16. Identify At-Risk Transportation Corridors
- MH-17. Identify Alternative Routes for Transit Service
- EH-2. Provide Heat Mitigation for Public Walkways and Transit Stops

Chapter 5

- CE-1. Create a Construction Plan with Community Input
- CE-2. Ensure Active Modes Access During Construction
- PH-2. Increase Urban Tree Canopy and Green Spaces
- IC-2. Adopt Design Standards
- IC-3. Promotes Accessibility
- IC-8. Enhanced Access to Community Resources
- AH-2. Promote Affordable Housing in Transit-Rich Areas

Affordable Housing

Chapter 3

- T-1. Increase Residential Density
- T-3. Provide Transit-Oriented Development
- T-4. Integrate Affordable and Below Market Rate Housing
- T-16. Unbundle Residential Parking Costs from Property Cost

Chapter 4

- MH-27. Provide Greater Affordable Housing Options

Chapter 5

- AH-1. Support Community Land Trusts
- AH-2. Promote Affordable Housing in Transit-Rich Areas
- AH-3. Protection for Existing Tenants of Redevelopment Projects
- AH-4. Incorporates Permanent Supportive Housing
- AH-5. Make Housing Units Permanently Affordable
- AH-6. Support the Formation of Collective Ownership Models: Limited-Equity Housing Cooperatives or Mutual Housing Associations
- AH-7. No Net Loss of Affordable Housing Units/One-For-One Affordable Housing Policies

Air Quality Exposure Reduction**Chapter 3**

- T-36. Create Urban Non-Motorized Zones
- T-49. Replace Traffic Controls with Roundabout
- T-52. Designate Zero Emissions Delivery Zones
- T-53. Electrify Loading Docks
- E-1. Buildings Exceed 2019 Title 24 Building Envelope Energy Efficiency Standards
- E-2. Require Energy Efficient Appliances
- E-3-A. Require Energy Efficient Residential Boilers
- E-3.B. Require Energy Efficient Commercial Packaged Boilers
- E-4. Install Cool Roofs and/or Cool Walls in Residential Development
- E-5. Install Green Roofs in Place of Dark Roofs

- E-12. Install Alternative Type of Water Heater in Place of Gas Storage Tank Heater in Residences
- E-13. Install Electric Ranges in Place of Gas Ranges
- E-14. Limit Wood Burning Devices and Natural Gas/Propane Fireplaces in Residential Development
- E-15. Require All-Electric Development
- E-25. Install Electric Heat Pumps
- LL-1. Replace Gas Powered Landscape Equipment with Zero-Emission Landscape Equipment
- LL-2. Implement Yard Equipment Exchange Program
- C-1-A. Use Electric or Hybrid Powered Equipment
- C-1-B. Use Cleaner-Fuel Equipment
- C-2. Limit Heavy-Duty Diesel Vehicle Idling

Chapter 4

- MH-30. Establish Community Resilience Hubs
- WF-1. Implement Fire-safe Landscaping
- WF-2. Install Fire Suppression Systems and Improve Structural Strength
- WF-8. Implement Fuel Management
- WF-9. Install Air Filters
- EH-4. Enhance Building Envelope Efficiency
- EH-9. Expand Urban Tree Canopy

Chapter 5

- CE-4. Portable Indoor Air Filtration for Nearby Residents During Construction
- CE-5. Air Quality Monitoring and Response Plan
- PH-1. Establish Vegetative Barriers to Reduce Pollution Exposure
- PH-2. Increase Urban Tree Canopy and Green Spaces

PH-3. Highly Rated Air Filtration

PH-4. Create Healthful, Sustainable Indoor Spaces

IC-2. Adopt Design Standards

CR-2. Support the Development and Operations of Community Resilience Centers

Climate Resilience

Chapter 3

T-17. Improve Street Connectivity

T-18. Provide Pedestrian Network Improvement

T-19-A. Construct or Improve Bike Facility

T-19-B. Construct or Improve Bike Boulevard

T-20. Expand Bikeway Network

T-32. Orient Project Toward Transit, Bicycle, or Pedestrian Facility

T-33. Locate Project near Bike Path/Bike Lane

E-1. Buildings Exceed 2019 Title 24 Building Envelope Energy Efficiency Standards

E-4. Install Cool Roofs and/or Cool Walls in Residential Development

E-5. Install Green Roofs in Place of Dark Roofs

E-6. Encourage Residential Participation in Existing Demand Response Program(s)

E-10-A. Establish Onsite Renewable Energy Systems—Generic

E-10-B. Establish Onsite Renewable Energy Systems—Solar Power

E-10-C. Establish Onsite Renewable Energy Systems—Wind Power

E-16. Require Zero Net Energy Buildings

E-17. Require Renewable-Surplus Buildings

E-20. Install Whole-House Fans

E-21. Install Cool Pavements

E-23. Use Microgrids and Energy Storage

E-24. Provide Battery Storage

E-25. Install Electric Heat Pumps

W-1. Use Reclaimed Non-Potable Water

W-2. Use Grey Water

W-3. Use Locally Sourced Water Supply

W-4. Require Low-Flow Water Fixtures

W-5. Design Water-Efficient Landscapes

W-6. Reduce Turf in Landscapes and Lawns

W-7. Adopt a Water Conservation Strategy

S-3. Require Edible Food Recovery Program Partnerships with Food Generators

S-5. Source Wood Materials from Urban Wood Re-Use Program

N-1. Create New Vegetated Open Space

N-2. Expand Urban Tree Planting

N-3. Implement Management Practices to Improve the Health and Function of Natural and Working Lands

N-5. Establish a Local Farmer's Market

N-6. Establish Community Gardens

C-4. Use Local and Sustainable Building Materials

Chapter 4

All measures in the chapter.

Chapter 5

CCD-4. Conduct Community Asset Mapping

IE-1. Prioritize Outreach to Communities of Color and Underserved Groups

IE-3. Elevate Voices of Underrepresented Groups in Project Direction and Outreach

IE-4. Inclusive Community Meetings

PH-1. Establish Vegetative Barriers to Reduce Pollution Exposure

PH-2. Increase Urban Tree Canopy and Green Spaces

PH-3. Highly Rated Air Filtration

PH-5. Provide Equitable Food Access and Food Justice

IC-2. Adopt Design Standards

IC-4. Enhanced Open and Green Spaces

IC-5. Designated Space for Community-Based Organizations, Disadvantaged Businesses, and Community Assets

IC-8. Enhanced Access to Community Resources

AH-1. Support Community Land Trusts

CR-1. Adapt and Re-use Vacant Lots for Green Infrastructure

CR-2. Support the Development and Operations of Community Resilience Centers

CR-3. Passive Survivability

Community Ownership and Self-Determination

Chapter 3

T-31-B. Improve Destination Accessibility in Underserved Areas

N-6. Establish Community Gardens

Chapter 4

MH-11. Encourage/Actively Engage Community in Local Planning

MH-12. Enhance Community Network Support

MH-13. Support Local Food Systems

MH-35. Increase Parks in Underserved Communities

MH-36. Decentralize and Localize Energy Production and Storage

MH-37. Develop Climate Hazard Notification System

Chapter 5

CCD-1. Consult Pre-existing Community Knowledge/Priorities

CCD-2. Conduct a Stakeholder Analysis and Develop a Community-Centered Outreach Plan

CCD-3. Conduct a Community Needs Assessment

CCD-4. Conduct Community Asset Mapping

CCD-5. Establish a Community Benefits Agreement

IE-2. Establish or Join a Community Project Steering Committee

IE-3. Elevate Voices of Underrepresented Groups in Project Direction and Outreach

IE-6. Conduct an Equity Assessment with Community Project Steering Committee

A-1. Use Participatory Budgeting

A-2. Establish Incentive and Penalty Provisions for Community Priorities

A-3. Evaluate Project Performance with Community Project Steering Committee/CBO

A-5. Public Disclosure of Project Commitments

PH-2. Increase Urban Tree Canopy and Green Spaces

IC-1. Invests in Local Arts and Culture to Affirm Community Identity

IC-5. Designated Space for Community-Based Organizations, Disadvantaged Businesses, and Community Assets

IC-8. Enhanced Access to Community Resources

AH-1. Support Community Land Trusts

AH-6. Support the Formation of Collective Ownership Models: Limited-Equity Housing Cooperatives or Mutual Housing Associations

CR-1. Adapt and Re-use Vacant Lots for Green Infrastructure

CR-2. Support the Development and Operations of Community Resilience Centers

Economic Resilience

Chapter 3

- T-1. Increase Residential Density
- T-4. Integrate Affordable and Below Market Rate Housing
- T-21-A. Implement Conventional Carshare Program
- T-21-B. Implement Electric Carshare Program
- T-22-A. Implement Pedal (Non-Electric) Bikeshare Program
- T-22-B. Implement Electric Bikeshare Program
- T-22-C. Implement Scootershare Program
- T-25. Extend Transit Network Coverage or Hours
- T-31-B. Improve Destination Accessibility in Underserved Areas
- E-6. Encourage Residential Participation in Existing Demand Response Program(s)
- E-23. Use Microgrids and Energy Storage
- E-24. Provide Battery Storage
- S-5. Source Wood Materials from Urban Wood Re-Use Program
- N-5. Establish a Local Farmer's Market
- N-6. Establish Community Gardens
- C-4. Use Local and Sustainable Building Materials

Chapter 4

- MH-1. Strengthen Energy Infrastructure
- MH-2. Use Climate-Resilient Design for Infrastructure
- MH-3. Coordinate Redundant Transportation Access
- MH-4. Strengthen Building Structures
- MH-5. Use Green Infrastructure for Stormwater Management
- MH-6. Upgrade Water Systems

- MH-7. Construct Water Storage Facilities
- MH-8. Decrease Road Vulnerability to Landslides
- MH-9. Support Business Resiliency
- MH-13. Support Local Food Systems
- MH-15. Identify Alternative Activities in Climate Sensitive Recreation Areas
- MH-16. Identify At-Risk Transportation Corridors
- MH-24. Develop Climate Emergency/Business Resilience Plan
- MH-28. Transition to Climate-Smart Energy
- MH-29. Identify Climate Hazard Overlay Zones
- MH-36. Decentralize and Localize Energy Production and Storage
- SLR-3. Implement Natural Coastline Infrastructure
- SLR-4. Strengthen Building Against Flood
- SLR-5. Use Moveable Infrastructure
- SLR-7. Require Consideration of Sea Level Rise for New Development
- SLR-10. Sell off High-Risk Area Development Rights
- SLR-11. Site Outside Coastal Hazard Zone
- SLR-13. Provide Removal Options in Flood Zones
- EP-4. Waterproof Operational Equipment
- EP-5. Upgrade Wastewater Systems
- EP-6. Site Outside Floodplain
- EP-7. Maintain Stormwater Infrastructure on Key Routes
- WF-1. Implement Fire-safe Landscaping
- WF-2. Install Fire Suppression Systems and Improve Structural Strength
- WF-3. Strengthen Vulnerable Assets in High Wildfire Risk Areas

WF-4. Educate on Wildfire Resistant Landscaping

WF-5. Site Outside WUI

WF-6. Designate and Strengthen Wildfire Emergency Routes

WF-7. Develop Fire Risk Assessment for New Development

WF-8. Implement Fuel Management

WF-10. Adopt WUI Building Standards

EH-4. Enhance Building Envelope Efficiency

EH-5. Upgrade to Efficient Equipment/Infrastructure

EH-7. Install Equipment Cooling System

D-6. Build Alternatives Forms of Water Recreation

D-7. Diversify Water Supply Sources

D-8. Develop Groundwater Sustainability Plan

Chapter 5

CCD-5. Establish a Community Benefits Agreement

CE-6. Provide Funds to Businesses Impacted by Construction Activities

PH-5. Provide Equitable Food Access and Food Justice

IEP-1. Local Labor and Apprenticeships (Construction)

IEP-2. Local Labor and Apprenticeships (Operations)

IEP-3. Contract with Diverse Suppliers

IEP-4. Use of Locally/Regionally Manufactured Products and Materials

IEP-5. Higher Wage and Working Condition Standards

IC-5. Designated Space for Community-Based Organizations, Disadvantaged Businesses, and Community Assets

IC-6. Create Non-Standard Commercial or Retail Spaces

IC-8. Enhanced Access to Community Resources

AH-3. Protection for Existing Tenants of Redevelopment Projects

AH-4. Incorporates Permanent Supportive Housing

Energy and Grid Resilience

Chapter 3

T-53. Electrify Loading Docks

T-54. Install Hydrogen Fueling Infrastructure

Energy section – all measures except E-14

Water section – all measures

LL-1. Replace Gas Powered Landscape Equipment with Zero-Emission Landscape Equipment

C-1-A. Use Electric or Hybrid Powered Equipment

C-1-B. Use Cleaner-Fuel Equipment

Chapter 4

MH-1. Strengthen Energy Infrastructure

MH-28. Transition to Climate-Smart Energy

MH-36. Decentralize and Localize Energy Production and Storage

MH-40. Address Energy/Water Efficiency Funding Barriers

EH-3. Install Heat-Reducing Roof

EH-4. Enhance Building Envelope Efficiency

EH-14. Develop Low-Income Energy Programs

CR-3. Passive Survivability

Food Justice and Access

Chapter 3

S-3. Require Edible Food Recovery Program Partnerships with Food Generators

N-3. Implement Management Practices to Improve the Health and Function of Natural and Working Lands

N-5. Establish a Local Farmer's Market

N-6. Establish Community Gardens

Chapter 4

MH-13. Support Local Food Systems

MH-18. Maintain Soil Health

MH-41. Expand Urban Greening/Agriculture

Chapter 5

PH-5. Provide Equitable Food Access and Food Justice

IC-5. Designated Space for Community-Based Organizations, Disadvantaged Businesses, and Community Assets

IC-6. Create Non-Standard Commercial or Retail Spaces

IC-8. Enhanced Access to Community Resources

CR-1. Adapt and Re-use Vacant Lots for Green Infrastructure

Green Infrastructure and Low-Impact Development (LID)

Chapter 3

E-5. Install Green Roofs in Place of Dark Roofs

W-5. Design Water-Efficient Landscapes

W-7. Adopt a Water Conservation Strategy

N-1. Create New Vegetated Open Space

N-2. Expand Urban Tree Planting

N-3. Implement Management Practices to Improve the Health and Function of Natural and Working Lands

N-6. Establish Community Gardens

Chapter 4

MH-5. Use Green Infrastructure for Stormwater Management

MH-23. Landscape with Climate Considerations

MH-32. Establish Urban Tree Management Plan

MH-33. Implement Park and Natural Resources Protection

MH-35. Increase Parks in Underserved Communities

MH-39. Implement Pervious and Climate-Smart Surfaces

MH-41. Expand Urban Greening/Agriculture

EP-3. Install Stormwater Cistern/Retention Basin

EH-1. Install Green Infrastructure

EH-8. Use Alternative Pavement Surfaces

EH-9. Expand Urban Tree Canopy

D-3. Install Drought Resistant Landscaping

Chapter 5

PH-1. Establish Vegetative Barriers to Reduce Pollution Exposure

PH-2. Increase Urban Tree Canopy and Green Spaces

IC-4. Enhanced Open and Green Spaces

CR-1. Adapt and Re-use Vacant Lots for Green Infrastructure

Job Development

Chapter 3

T-2. Increase Job Density

T-3. Provide Transit-Oriented Development

T-25. Extend Transit Network Coverage or Hours

T-26. Increase Transit Service Frequency

T-31-B. Improve Destination Accessibility in Underserved Areas

T-40. Implement School Bus Program

E-22. Obtain Third-party HVAC Commissioning and Verification of Energy Savings

S-1. Institute or Extend Recycling Services

S-5. Source Wood Materials from Urban Wood Re-Use Program

N-4. Require Best Management Practices for Manure Management

N-5. Establish a Local Farmer's Market

C-3. Use Local Construction Contractors

C-4. Use Local and Sustainable Building Materials

R-1. Use Alternative Refrigerants Instead of High-GWP Refrigerants

R-2. Install Secondary Loop and/or Cascade Supermarket Systems in Place of Direct Expansion Systems

R-3. Install Transcritical CO₂ Supermarket Systems in Place of High-GWP Systems

R-4. Install Microchannel Heat Exchangers in A/C Equipment in Place of Conventional Heat Exchanger

Chapter 4

MH-13. Support Local Food Systems

MH-24. Develop Climate Emergency/Business Resilience Plan

MH-36. Decentralize and Localize Energy Production and Storage

MH-40. Address Energy/Water Efficiency Funding Barriers

MH-41. Expand Urban Greening/Agriculture

WF-8. Implement Fuel Management

D-6. Build Alternatives Forms of Water Recreation

Chapter 5

CCD-5. Establish a Community Benefits Agreement

IEP-1. Local Labor and Apprenticeships (Construction)

IEP-2. Local Labor and Apprenticeships (Operations)

IEP-3. Contract with Diverse Suppliers

IEP-4. Use of Locally/Regionally Manufactured Products and Materials

IEP-5. Higher Wage and Working Condition Standards

IC-1. Invests in Local Arts and Culture to Affirm Community Identity

IC-5. Designated Space for Community-Based Organizations, Disadvantaged Businesses, and Community Assets

IC-6. Create Non-Standard Commercial or Retail Spaces

Nature-Based Solutions

All measures listed for *Green Infrastructure and Low-Impact Development (LID)*.

S-5. Source Wood Materials from Urban Wood Re-Use Program

MH-34. Implement Integrated Watershed Management

SLR-3. Implement Natural Coastline Infrastructure

Passive Survivability

Chapter 3

T-14. Provide Electric Vehicle Charging Infrastructure

E-1. Buildings Exceed 2019 Title 24 Building Envelope Energy Efficiency Standards

E-2. Require Energy Efficient Appliances

E-3-A. Require Energy Efficient Residential Boilers

E-4. Install Cool Roofs and/or Cool Walls in Residential Development

E-5. Install Green Roofs in Place of Dark Roofs

E-10-A. Establish Onsite Renewable Energy Systems—Generic

E-10-B. Establish Onsite Renewable Energy Systems—Solar Power

E-10-C. Establish Onsite Renewable Energy Systems—Wind Power

E-12. Install Alternative Type of Water Heater in Place of Gas Storage Tank Heater in Residences

E-13. Install Electric Ranges in Place of Gas Ranges

E-15. Require All-Electric Development

E-16. Require Zero Net Energy Buildings

E-17. Require Renewable-Surplus Buildings

E-20. Install Whole-House Fans

E-23. Use Microgrids and Energy Storage

E-24. Provide Battery Storage

E-25. Install Electric Heat Pumps

W-1. Use Reclaimed Non-Potable Water

W-2. Use Grey Water

W-4. Require Low-Flow Water Fixtures

Chapter 4

MH-2. Use Climate-Resilient Design for Infrastructure

MH-4. Strengthen Building Structures

MH-5. Use Green Infrastructure for Stormwater Management

MH-12. Enhance Community Network Support

MH-13. Support Local Food Systems

MH-28. Transition to Climate-Smart Energy

MH-29. Identify Climate Hazard Overlay Zones

MH-36. Decentralize and Localize Energy Production and Storage

MH-41. Expand Urban Greening/Agriculture

SLR-2. Raise Building Floor Elevations

SLR-4. Strengthen Building Against Flood

SLR-5. Use Moveable Infrastructure

SLR-7. Require Consideration of Sea Level Rise for New Development

SLR-8. Develop Setbacks

SLR-11. Site Outside Coastal Hazard Zone

SLR-12. Limit Basements in Flood Zones

EP-1. Incorporate Runoff Projections in Hydrologic Designs

EP-2. Install Stormwater Outfall Pumps/Lift Station for Water Drainage

EP-3. Install Stormwater Cistern/Retention Basin

EP-4. Waterproof Operational Equipment

EP-6. Site Outside Floodplain

WF-1. Implement Fire-safe Landscaping

WF-2. Install Fire Suppression Systems and Improve Structural Strength

WF-4. Educate on Wildfire Resistant Landscaping

WF-5. Site Outside WUI

WF-6. Designate and Strengthen Wildfire Emergency Routes

WF-9. Install Air Filters

WF-10. Adopt WUI Building Standards

EH-1. Install Green Infrastructure

EH-3. Install Heat-Reducing Roof

EH-4. Enhance Building Envelope Efficiency

EH-5. Upgrade to Efficient Equipment/Infrastructure

EH-12. Provide Backup Power for Cooling Centers

EH-14. Develop Low-Income Energy Programs

EH-15. Provide Low-Income Air Conditioning

D-1. Install Water Efficient Appliances

D-2. Install Water Reuse Infrastructure

Chapter 5

PH-3. Highly Rated Air Filtration

PH-4. Create Healthful, Sustainable Indoor Spaces

PH-5. Provide Equitable Food Access and Food Justice

IC-2. Adopt Design Standards

IC-3. Promotes Accessibility

CR-1. Adapt and Re-use Vacant Lots for Green Infrastructure

CR-3. Passive Survivability

Poverty

Chapter 3

T-3. Provide Transit-Oriented Development

T-4. Integrate Affordable and Below Market Rate Housing

T-9. Implement Subsidized or Discounted Transit Program

T-11. Provide Employer-Sponsored Vanpool

T-16. Unbundle Residential Parking Costs from Property Cost

T-23. Community-Based Travel Planning

T-25. Extend Transit Network Coverage or Hours

T-26. Increase Transit Service Frequency

T-29. Reduce Transit Fares

T-31-B. Improve Destination Accessibility in Underserved Areas

E-4. Install Cool Roofs and/or Cool Walls in Residential Development

E-16. Require Zero Net Energy Buildings

E-17. Require Renewable-Surplus Buildings

E-25. Install Electric Heat Pumps

S-3. Require Edible Food Recovery Program Partnerships with Food Generators

N-6. Establish Community Gardens

Chapter 4

MH-12. Enhance Community Network Support

MH-13. Support Local Food Systems

MH-21. Ensure Homeless Services' Availability in Hazardous Conditions

MH-27. Provide Greater Affordable Housing Options

MH-30. Establish Community Resilience Hubs

MH-35. Increase Parks in Underserved Communities

MH-36. Decentralize and Localize Energy Production and Storage

EH-14. Develop Low-Income Energy Programs

EH-15. Provide Low-Income Air Conditioning

EH-16. Establish a Shuttle System to Cooling Centers

Chapter 5

CCD-5. Establish a Community Benefits Agreement

PH-5. Provide Equitable Food Access and Food Justice

IEP-1. Local Labor and Apprenticeships (Construction)

IEP-2. Local Labor and Apprenticeships (Operations)

IEP-3. Contract with Diverse Suppliers

IEP-5. Higher Wage and Working Condition Standards

IC-5. Designated Space for Community-Based Organizations, Disadvantaged Businesses, and Community Assets

IC-8. Enhanced Access to Community Resources

AH-2. Promote Affordable Housing in Transit-Rich Areas

AH-3. Protection for Existing Tenants of Redevelopment Projects

AH-4. Incorporates Permanent Supportive Housing

AH-5. Make Housing Units Permanently Affordable

AH-6. Support the Formation of Collective Ownership Models: Limited-Equity Housing Cooperatives or Mutual Housing Associations

AH-7. No Net Loss of Affordable Housing Units/One-For-One Affordable Housing Policies

Racial Equity

Chapter 4

MH-11. Encourage/Actively Engage Community in Local Planning

MH-12. Enhance Community Network Support

MH-35. Increase Parks in Underserved Communities

Chapter 5

CCD-1. Consult Pre-existing Community Knowledge/Priorities

CCD-2. Conduct a Stakeholder Analysis and Develop a Community-Centered Outreach Plan

CCD-3. Conduct a Community Needs Assessment

CCD-5. Establish a Community Benefits Agreement

IE-1. Prioritize Outreach to Communities of Color and Underserved Groups

IE-2. Establish or Join a Community Project Steering Committee

IE-3. Elevate Voices of Underrepresented Groups in Project Direction and Outreach

IE-4. Inclusive Community Meetings

IE-5. Provide Education on Essential Topics Related to Project

IE-6. Conduct an Equity Assessment with Community Project Steering Committee

A-1. Use Participatory Budgeting

A-3. Evaluate Project Performance with Community Project Steering Committee/CBO

PH-2. Increase Urban Tree Canopy and Green Spaces

PH-5. Provide Equitable Food Access and Food Justice

IEP-1. Local Labor and Apprenticeships (Construction)

IEP-2. Local Labor and Apprenticeships (Operations)

IEP-3. Contract with Diverse Suppliers

IEP-5. Higher Wage and Working Condition Standards

IC-1. Invests in Local Arts and Culture to Affirm Community Identity

IC-5. Designated Space for Community-Based Organizations, Disadvantaged Businesses, and Community Assets

Social Inclusion

Chapter 3

T-4. Integrate Affordable and Below Market Rate Housing

T-31-B. Improve Destination Accessibility in Underserved Areas

T-46. Improve Transit Access, Safety, and Comfort

E-4. Install Cool Roofs and/or Cool Walls in Residential Development

E-5. Install Green Roofs in Place of Dark Roofs

E-16. Require Zero Net Energy Buildings

E-17. Require Renewable-Surplus Buildings

E-25. Install Electric Heat Pumps

S-3. Require Edible Food Recovery Program Partnerships with Food Generators

N-2. Expand Urban Tree Planting

Chapter 4

MH-10. Implement Community-wide Climate Change Outreach Program

MH-11. Encourage/Actively Engage Community in Local Planning

MH-12. Enhance Community Network Support

MH-21. Ensure Homeless Services' Availability in Hazardous Conditions

MH-27. Provide Greater Affordable Housing Options

MH-30. Establish Community Resilience Hubs

MH-32. Establish Urban Tree Management Plan

MH-35. Increase Parks in Underserved Communities

MH-36. Decentralize and Localize Energy Production and Storage

MH-38. Integrate Climate into Health Programs

EH-11. Work with Schools to Reduce Heat Exposure

EH-12. Provide Backup Power for Cooling Centers

EH-14. Develop Low-Income Energy Programs

EH-15. Provide Low-Income Air Conditioning

EH-16. Establish a Shuttle System to Cooling Centers

Chapter 5

All measures in the chapter.

Social Resilience

Chapter 3

T-4. Integrate Affordable and Below Market Rate Housing

T-17. Improve Street Connectivity

T-31-A. Locate Project in Area with High Destination Accessibility

T-31-B. Improve Destination Accessibility in Underserved Areas

T-41. Implement a School Pool Program

N-1. Create New Vegetated Open Space

N-2. Expand Urban Tree Planting

N-5. Establish a Local Farmer's Market

N-6. Establish Community Gardens

Chapter 4

MH-11. Encourage/Actively Engage Community in Local Planning

MH-12. Enhance Community Network Support

MH-30. Establish Community Resilience Hubs

MH-32. Establish Urban Tree Management Plan

MH-35. Increase Parks in Underserved Communities

MH-41. Expand Urban Greening/Agriculture

EH-1. Install Green Infrastructure

EH-2. Provide Heat Mitigation for Public Walkways and Transit Stops

EH-9. Expand Urban Tree Canopy
EH-11. Work with Schools to Reduce Heat Exposure

Chapter 5

CCD-4. Conduct Community Asset Mapping
CCD-5. Establish a Community Benefits Agreement

PH-2. Increase Urban Tree Canopy and Green Spaces

PH-5. Provide Equitable Food Access and Food Justice

IEP-1. Local Labor and Apprenticeships (Construction)

IEP-2. Local Labor and Apprenticeships (Operations)

IEP-3. Contract with Diverse Suppliers

IC-1. Invests in Local Arts and Culture to Affirm Community Identity

IC-2. Adopt Design Standards

IC-3. Promotes Accessibility

IC-4. Enhanced Open and Green Spaces

IC-5. Designated Space for Community-Based Organizations, Disadvantaged Businesses, and Community Assets

IC-8. Enhanced Access to Community Resources

AH-1. Support Community Land Trusts

AH-2. Promote Affordable Housing in Transit-Rich Areas

AH-3. Protection for Existing Tenants of Redevelopment Projects

AH-4. Incorporates Permanent Supportive Housing

AH-6. Support the Formation of Collective Ownership Models: Limited-Equity Housing Cooperatives or Mutual Housing Associations

CR-1. Adapt and Re-use Vacant Lots for Green Infrastructure

CR-2. Support the Development and Operations of Community Resilience Centers

Tree Canopy

Chapter 3

N-1. Create New Vegetated Open Space

N-2. Expand Urban Tree Planting

Chapter 4

MH-32. Establish Urban Tree Management Plan

MH-35. Increase Parks in Underserved Communities

MH-41. Expand Urban Greening/Agriculture

EH-9. Expand Urban Tree Canopy

Chapter 5

PH-2. Increase Urban Tree Canopy and Green Spaces

IC-4. Enhanced Open and Green Spaces

CR-1. Adapt and Re-use Vacant Lots for Green Infrastructure

Urban Heat Island Reduction

Chapter 3

T-1. Increase Residential Density

T-15. Limit Residential Parking Supply

E-4. Install Cool Roofs and/or Cool Walls in Residential Development

E-5. Install Green Roofs in Place of Dark Roofs

E-21. Install Cool Pavements

N-1. Create New Vegetated Open Space

N-2. Expand Urban Tree Planting

N-3. Implement Management Practices to Improve the Health and Function of Natural and Working Lands

N-6. Establish Community Gardens

Chapter 4

MH-5. Use Green Infrastructure for Stormwater Management

MH-23. Landscape with Climate Considerations

MH-32. Establish Urban Tree Management Plan

MH-33. Implement Park and Natural Resources Protection

MH-35. Increase Parks in Underserved Communities

MH-39. Implement Pervious and Climate-Smart Surfaces

MH-41. Expand Urban Greening/Agriculture

EH-1. Install Green Infrastructure

EH-3. Install Heat-Reducing Roof

EH-8. Use Alternative Pavement Surfaces

EH-9. Expand Urban Tree Canopy

EH-10. Install Covered Parking

Chapter 5

PH-2. Increase Urban Tree Canopy and Green Spaces

IC-4. Enhanced Open and Green Spaces

CR-1. Adapt and Re-use Vacant Lots for Green Infrastructure

References

PolicyLink. n.d. *The Equity Manifesto*. Available: <https://www.policylink.org/about-us/equity-manifesto>. Accessed: October 2021.

U.S. Environmental Protection Agency (U.S. EPA). n.d. *Urban Runoff: Low Impact Development*. Available: <https://www.epa.gov/nps/urban-runoff-low-impact-development>. Accessed: October 2021.